



ISA 120.03 "MIDNIGHT SUN II"



GENERAL INFORMATION

Year	2006
Accommodation	10 guest in 5 cabins (3 doubles and 2 twins) 6 crew in 3 cabins
Flag	British
Lying	Ancona - Italy
Concept	ISA – International Shipyard Ancona
Naval Architecture	ISA – Technical Department
Exterior Design	Andrea Vallicelli

DIMENSION

Construction	FRP/ARAMAT
Classification	RINA ✕ 100-A-1.1 "Y"; CCL
Compliance	MCA Code of Practice, LY2 Short Range Yachts
LOA	36.45 m
LWL	30.00 m
Maximum Beam	7.40 m
Moulded Depth	3.65 m

DISPLACEMENT, SPEED AND RANGE

Displacement at Full Load	169 tons
Displacement at Half Load	155 tons
Draught (full load from B.L.)	1.50 m
Max. Speed	29 knots
Cruising speed	24 knots
Fuel Capacity	22,000 litres
Fresh water capacity	4,000 litres
Range at cruising speed	550 NM at 20 knots

MACHINERY

Main engine type	3 x MTU 16V 2000 M91
Engine Hours	Port 1323 – Starboard 1334 – Central 928
Main engine power	1471 kW @ 2350 rpm
Gearbox	2 x ZF 2565 RR = 2.867:1 1 x ZF 2555 RR = 2.030:1
Propulsion	2 x waterjet KAMEWA 71SII 1 x booster jet KAMEWA 56BII
Main generators	2 x 55 kW Kohler
Frequency Converter	Europe and USA

Main Deck



Main Saloon



Owner's Cabin





Twin Cabin

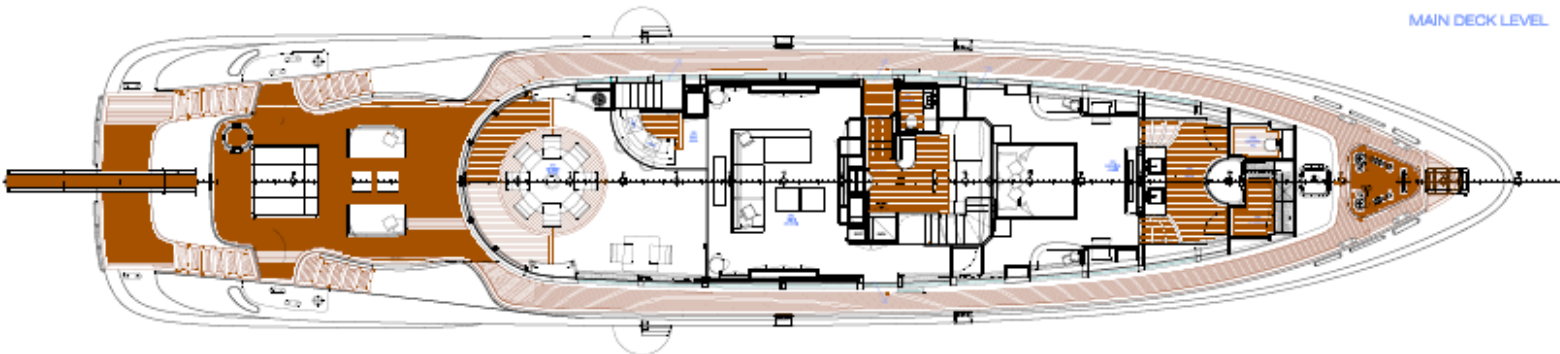


Guest Cabin

Sun Deck



MAIN DECK LEVEL



LOWER DECK LEVEL

